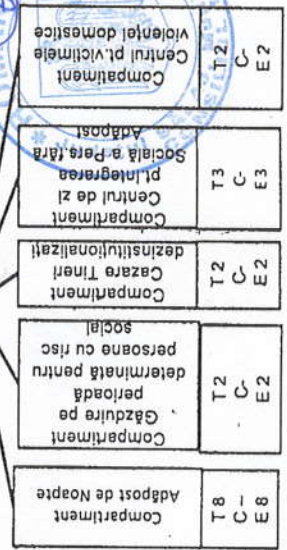
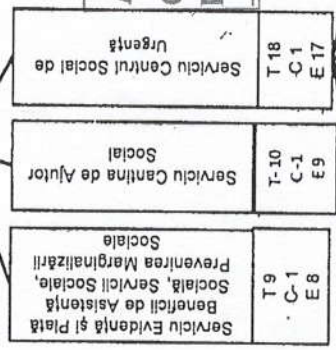
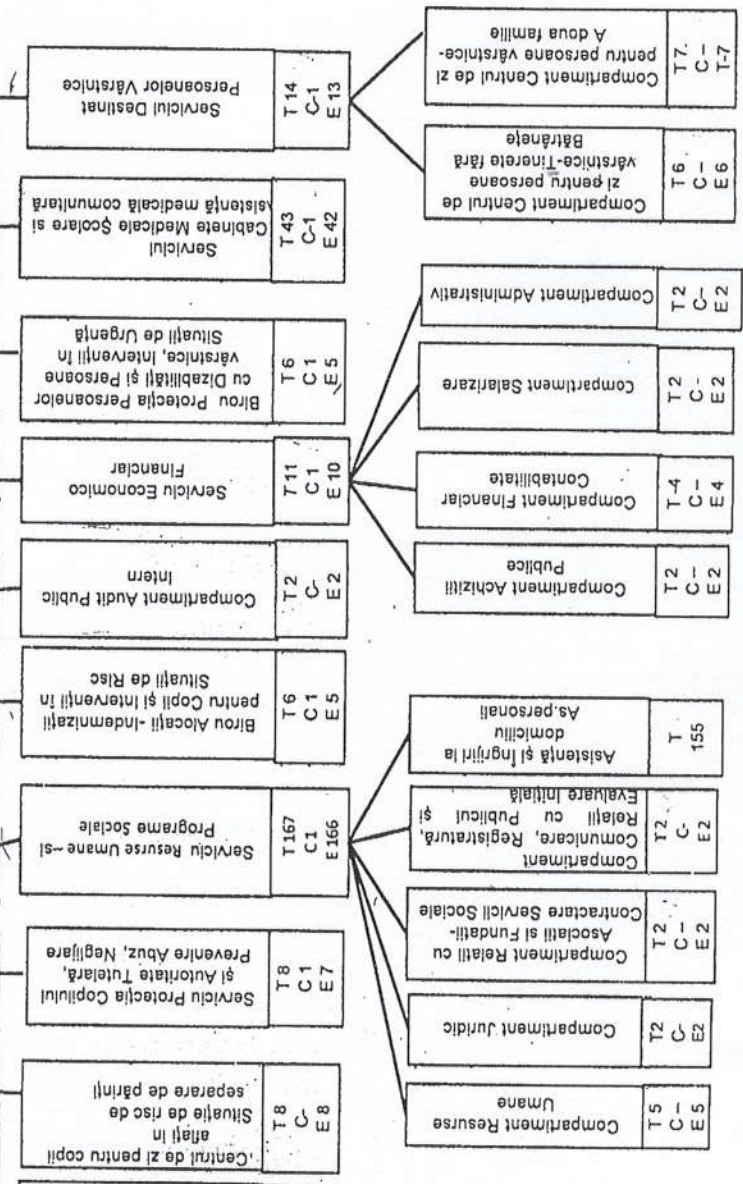
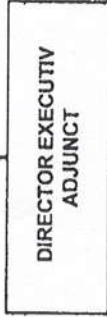
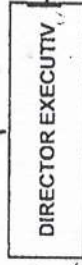
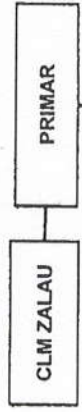


ORGANIGRAMA DIRECȚIEI DE ASISTENȚĂ SOCIALĂ ZALĂU

Anexa 1 la HCL nr. 67 din 31.03.2022

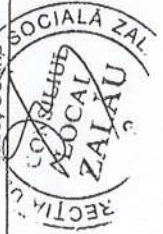
Post	T	C	E
Funcții publice	66	11	55
Personal contractual	239	1	238
Total	305	12	293



Anexa 1 la HCL Nr. 67 din 31.03.2022
PREȘEDINTE DE ȘEDINȚĂ
Teodor Băgajd



Director Executiv,
Băboș Delia



CONTRAȘEMNEAZĂ
SECRETAR GENERAL
Maira Bianca Tabacu